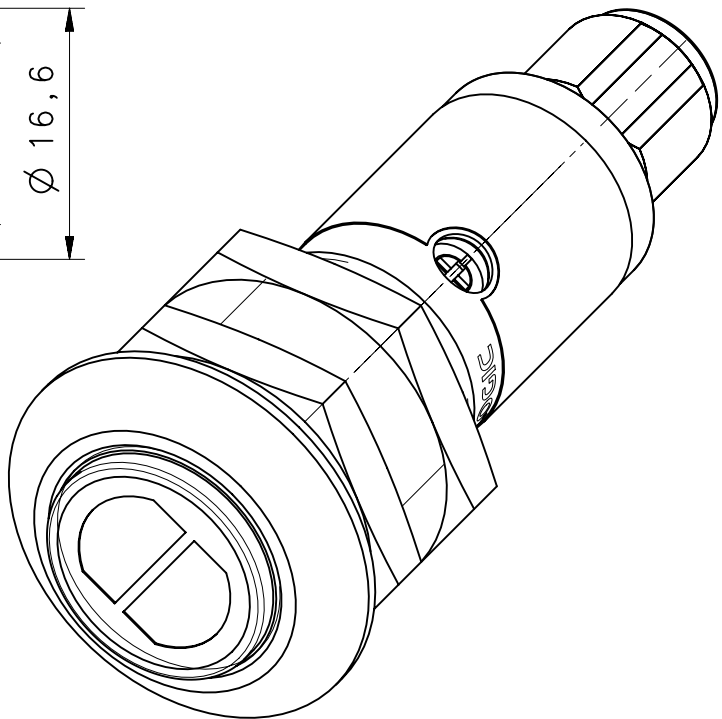
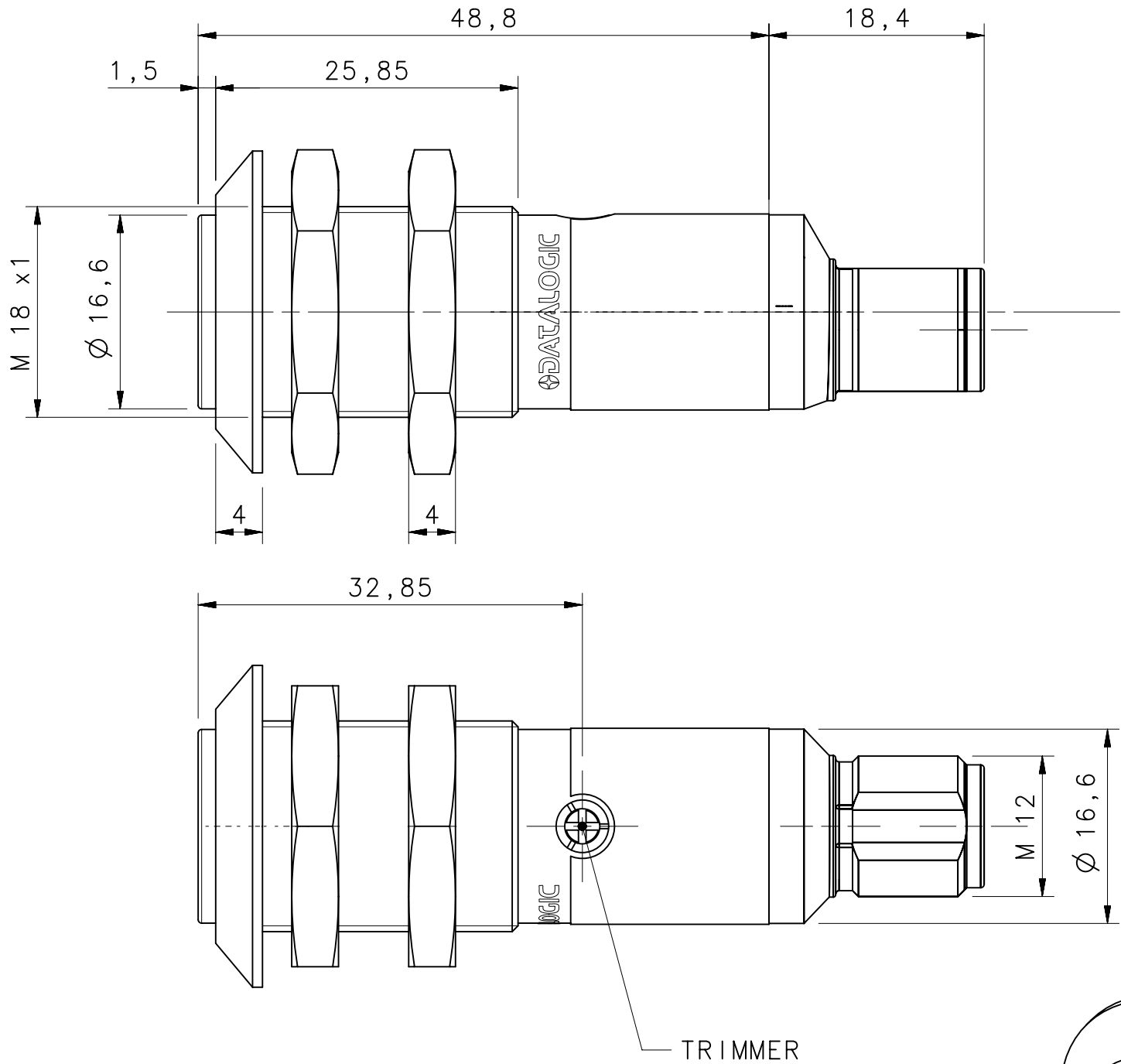
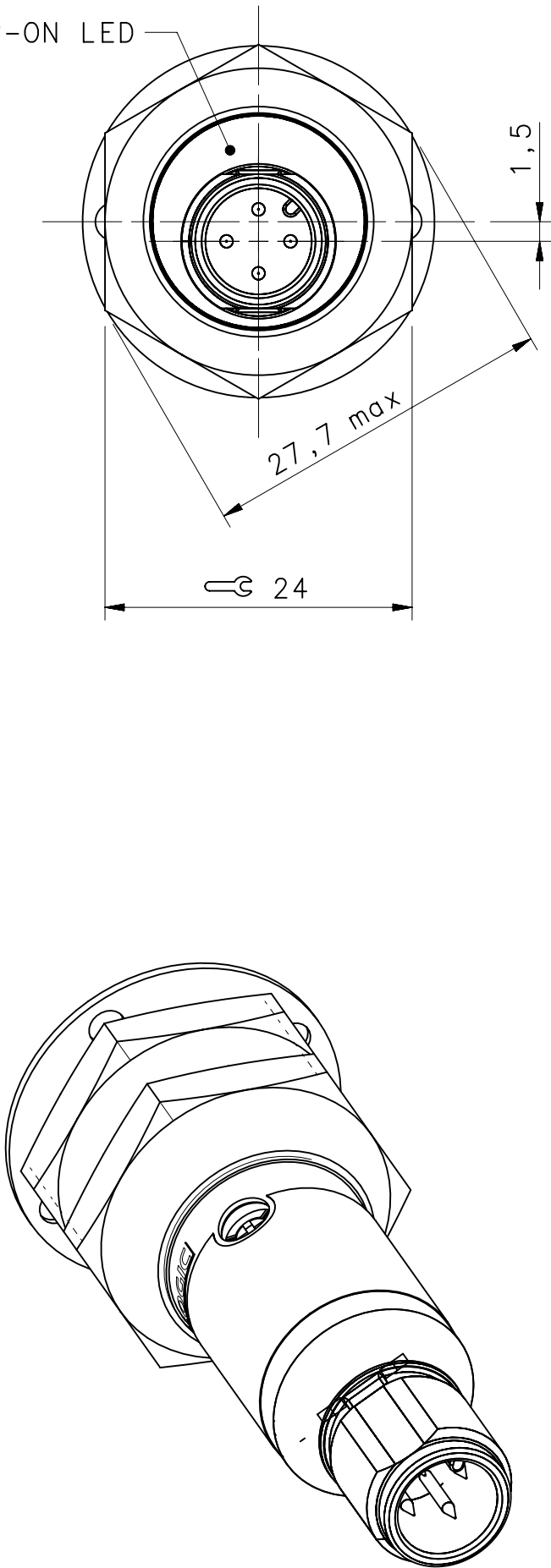
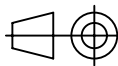



POWER-ON LED



MOD.	REV.	PROPOSAL	DESCRIPTION.				DATE	SIGN	
All materials employed have to be selected among RoHS compliant materials: the EC directives to be referred to are 2002/95/EC and correlated subsequent ones.									
DIMENSIONS WITHOUT TOLERANCE DEGREE: -				NOTE Version G Plastic, long, M12, trimmer.					
PRECISION DEGREE	DIMENSIONAL GROUPS					TREAT.		SCALE 2 : 1	
	> 0 A 6	> 6 A 30	> 30 A 120	> 120 A 315	> 315 A 999	MATER.			
MEDIUM (m)	± 0.1	± 0.2	± 0.3	± 0.5	± 0.8	DES. BY Aprile		DATE 05/06/12	APPROV. .
PRECISE (P)	± 0.05	± 0.1	± 0.15	± 0.2	± 0.3	NAME S15		MOLD N° .	REV.
 www.datalogic.com						CODE		PART N° DIM-0741	
						PART N° DIM-0741			